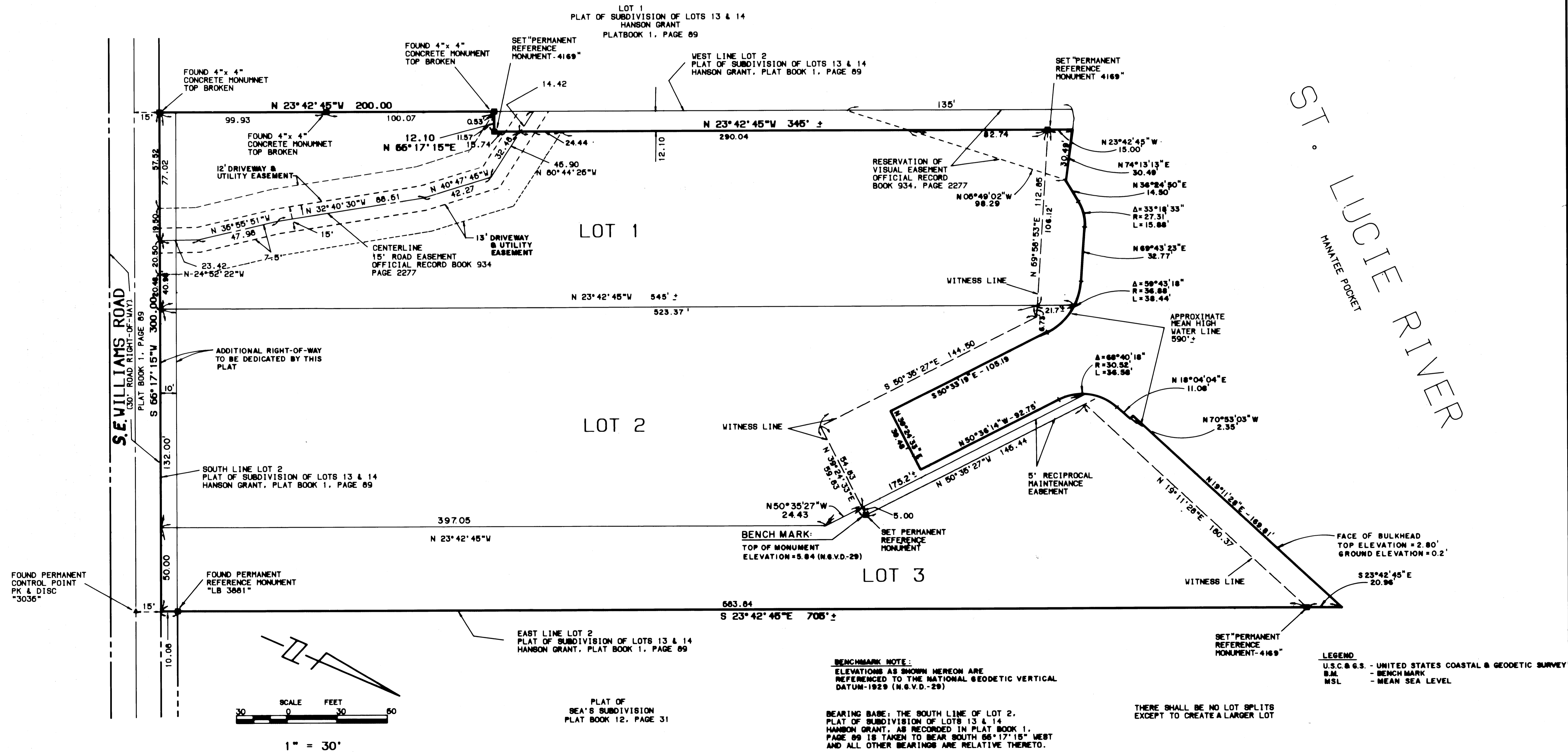


# A PLAT OF THE HAMMOCKS AT ROCKY POINT

BEING A REPLAT OF A PORTION OF LOT 2,  
PLAT OF SUBDIVISION OF LOTS 13 AND 14, HANSON GRANT,  
AS RECORDED IN PLATBOOK 1, PAGE 89, PUBLIC RECORDS OF  
PALM BEACH (NOW MARTIN) COUNTY, FLORIDA

Plat Book 13  
page 33  
Martin County  
5th day August  
1993

File No.  
1012868



ST. LUCIE RIVER  
MANTEE POCKET

LYNDALL, BROWNING, FENQUART & HELLSTROM, INC.  
CONSULTING ENGINEERS, PLANNERS & SURVEYORS

BLDG. 2000, SUITE 104 810 WINTON LANE BLVD. APT. 101, FT. PIERCE, FL. 34901 407-740-2000	10 CENTRAL PARKWAY SUITE 400 STUART, FL. 34907 407-880-2000	8886 BURNING ROAD SUITE 201 FT. PIERCE, FL. 34903 407-451-0400
---	--	---

2

2